

MORE THAN JUST REACH.

From the outset Skyjack identified two key parameters for these electric booms. Along with offering competitive reach specifications, Skyjack's 30' electric booms also feature exceptional drive and duty cycle performance. Increased duty cycles maximize the amount of work possible from a fully charged machine. Outstanding drive performance means loading trailers for transport is significantly improved.

A direct electric AC drive features two wheel motors operating in parallel to maximize gradeability and efficiency, while speed sensing traction control reduces loss of traction and tire scrubbing. Combining a machine weight of 14,560 lbs with appropriately sized batteries, a variable speed system pump, and the utilization of gravity for riser lowering, further aids machine efficiency.



Skyjack Head Office
55 Campbell Rd.
Guelph, ON Canada N1H 1B9

Sales Inquiries: 1-877-755-4387 (1-877-SJLIFTS)
Main Switchboard: 1-800-265-2738
Tel: 519-837-0888
Fax: 519-837-8104
Email: skyjack@skyjack.com

www.skyjack.com



SKYJACK 2 YEAR GOLD LEAF PROTECTION PROGRAM

This brochure is for illustrative purpose only and based on the latest information at the time of printing. Skyjack Inc. reserves the right to make changes at any time, without notice, to specifications, standard and optional equipment. Consult the Operating Maintenance and Parts Manuals for proper procedures. Work platforms have been tested to comply with ANSI and CSA standards as interpreted by Skyjack, Inc.

NA/ENG/07/2016



SJ30 AJE/ARJE
ELECTRIC ARTICULATING
BOOM





ROTATING AND NON ROTATING JIB.

The SJ30 ARJE (Articulating Rotating Jib Electric Boom) and SJ30 AJE (Articulating Jib Electric Boom) both offer working heights of 36' (11 m) with a horizontal outreach of 20' 6" (6.25 m). Ideal for warehouse, manufacturing and industrial settings that require up and over clearance in tight, confined spaces, both models have a width of 47" (1.19 m) and up and over clearance of 13' 1" (4 m).

- Direct AC electric drive
- Variable speed electric wheel motors
- 35% gradeability
- Dual spring applied, electromagnetically released brakes
- Regenerative braking
- Speed and angle sensing traction control
- Direction sensing drive and steer controls
- True vertical rise
- Relay based control system
- 28 mph (12.5 m/s) wind rating
- DC Powered emergency lowering
- Secondary guarding electrical (SGE)

IT'S A SKYJACK.

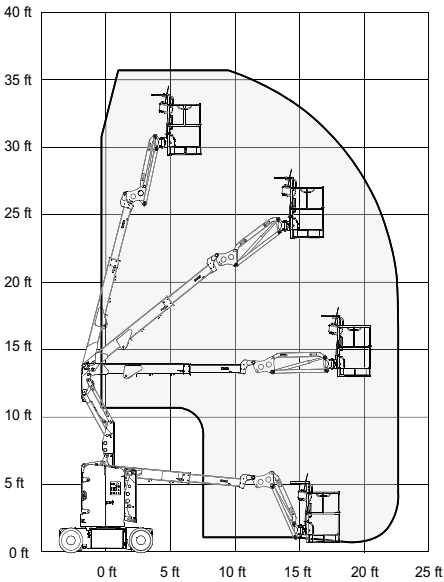
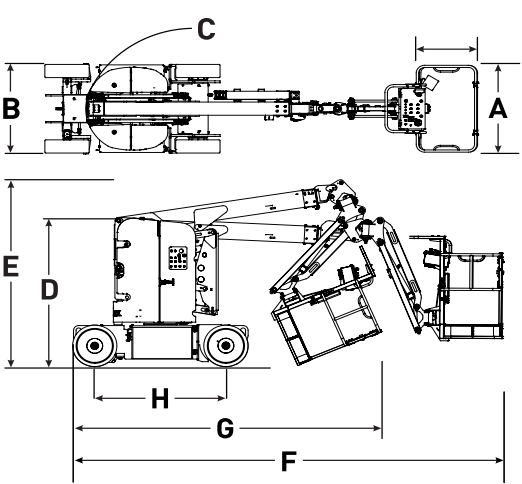
Similar to Skyjack's other articulating booms, the SJ30 ARJE and SJ30 AJE both feature SKYCODED™ Skyjack's dependable relayed based control system, SKYRISER™ true vertical rise, and EASYDRIVE™ Skyjack's exclusive direction sensing drive and steer controls.

Dimensions	SJ30 AJE	SJ30 ARJE
Work Height	35' 9" (10.90 m)	35' 6" (10.82 m)
Platform Height	29' 9" (9.07 m)	29' 6" (9.00 m)
Horizontal Reach	20' 6" (6.25 m)	20' 6" (6.25 m)
Up and Over Height	13' 1" (3.99 m)	13' 1" (3.99 m)
A Platform Size	30" x 46" (0.76 x 1.17 m)	30" x 46" (0.76 x 1.17 m)
B Width	47" (1.19 m)	47" (1.19 m)
C Tailswing	0	0
D Stowed Height	6' 7" (2.01 m)	6' 7" (2.01 m)
E Transport Height	7' 10" (2.39 m)	8' 4" (2.54 m)
F Stowed Length	17' 11" (5.46 m)	17' 10" (5.44 m)
G Transport Length	13' 5" (4.09 m)	13' 5" (4.09 m)
H Wheelbase	65" (1.65 m)	65" (1.65 m)
Ground Clearance	4" (10.16 cm)	4" (10.16 cm)

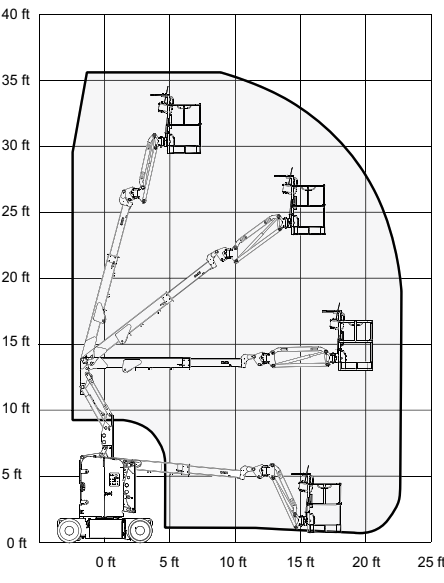
Specifications	SJ30 AJE	SJ30 ARJE
Turret Rotation	355° NC	355° NC
Platform Rotation	180°	180°
Jib Range of Motion - Horizontal	-	180°
Jib Range of Motion - Vertical	142° (+77°/-65°)	142° (+77°/-65°)
Weight	14,560 lbs (6,604 kg)	14,560 lbs (6,604 kg)
Gradeability	35%	35%
Turning Radius (Inside)	60" (1.52 m)	60" (1.52 m)
Turning Radius (Outside)	127" (3.23 m)	127" (3.23 m)
Drive Speed (Stowed)	3 mph (4.8 km/h)	3 mph (4.8 km/h)
Capacity	500 lbs (227 kg)	500 lbs (227 kg)
Maximum # of Persons (Indoor / Outdoor)	2/1	2/1
Wind Rating	28 mph (12.5 m/s)	28 mph (12.5 m/s)

MACHINE OPTIONS

- Pipe rack
- Tool caddy
- Platform work lights
- Flashing light
- 1/2" Airline to platform
- Control box cover
- 800W AC Inverter
- 360 Ah batteries
- 330 Ah AGM batteries
- Rear gate
- Bio oil
- Non destructive testing



SJ30 AJE



SJ30 ARJE

SIMPLY RELIABLE.

Skyjack not only believes in offering aerial equipment with exceptional reach and performance capabilities but also equipment that is reliable and easy to service. The SJ30 ARJE and SJ30 AJE are no exception. Design concepts proven on other Skyjack product have been utilized for both booms; common off the shelf parts are used wherever possible, components are well protected, while serviceable components are easily accessible. As with all other Skyjack product, the SJ30 ARJE and SJ30 AJE are covered by Skyjack's industry leading 2 year warranty program.

RENTAL READY!

- Outstanding drive performance means loading trailers for transport is significantly improved.
- Components are protected whether it be from water ingress or falling debris so you know the SJ30 is fit for typical rental applications.
- An optimized hydraulic system provides multi function capability for riser, boom, jib and platform rotation functions which promotes improved productivity.
- Exceptional efficiency via a variable speed system pump, reduced weight, optimized battery selection and the utilization of gravity for riser lowering.



SKYCODED. SKYRISER. EASYDRIVE. ACCESSORYZERS.